

PARTICIPATORY RESEARCH publications and project conclusions from ASH Berlin¹

2015
to
2022

SCIENTIFIC PUBLICATIONS



- 1. The Analysis of Qualitative Data With Peer Researchers: An Example From a Participatory Health Research Project**
In this article, we describe a participatory analysis of qualitative data. We demonstrate how the Grounded Theory Methodology can support the further development of participatory research.
- 2. Focus Groups In Participatory Research (in German only)**
An article on the use and value of focus groups in participatory research as a creative and multi-faceted method. With suggestions for future use and documentation.
- 3. Reflecting In Research Communities: Starting Points, Formats, Experiences (in German only)**
A contribution to the questions of how to reflect in participatory research projects (1), how research communities use their findings (2), and how they integrate these findings into the research process (3).

TRAINING & LEARNING VIDEOS

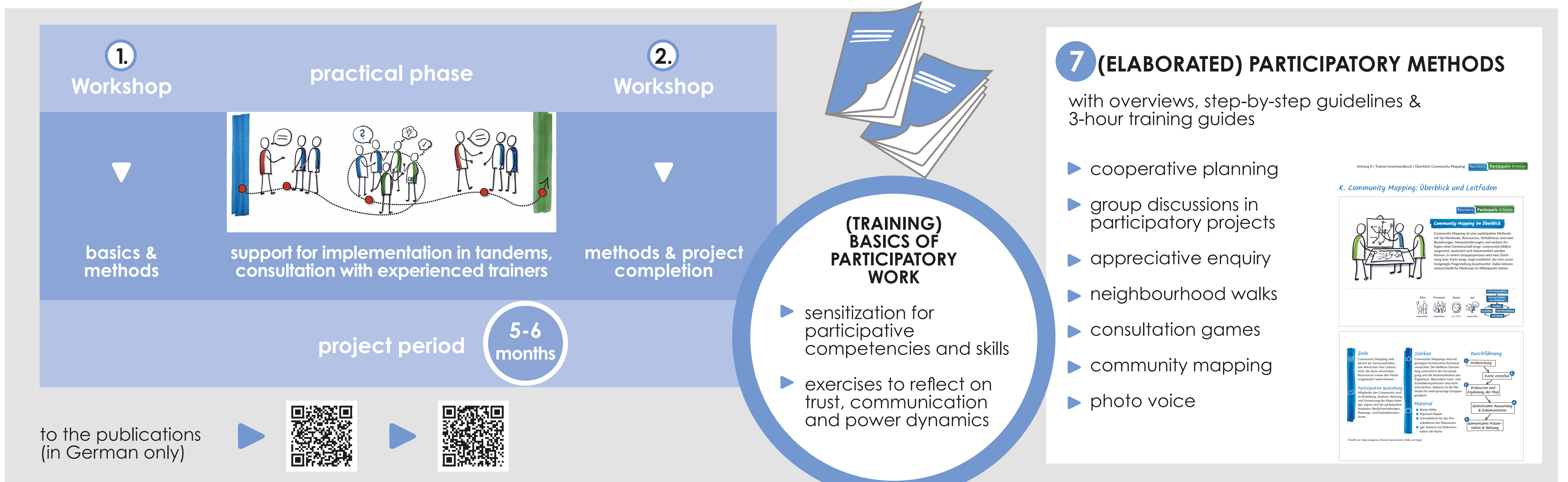
Strengthening participatory methods in the German-speaking countries



- ▶ **Using Focus Groups in Participatory Research. A How to Video – with English subtitles**
- ▶ **Focus Groups in Participatory Research Processes - What's the Use? Opportunities and Potentials in Research and Development (in German only)**
- ▶ **Focus Groups in Participatory Processes – Teaser (in German only)**

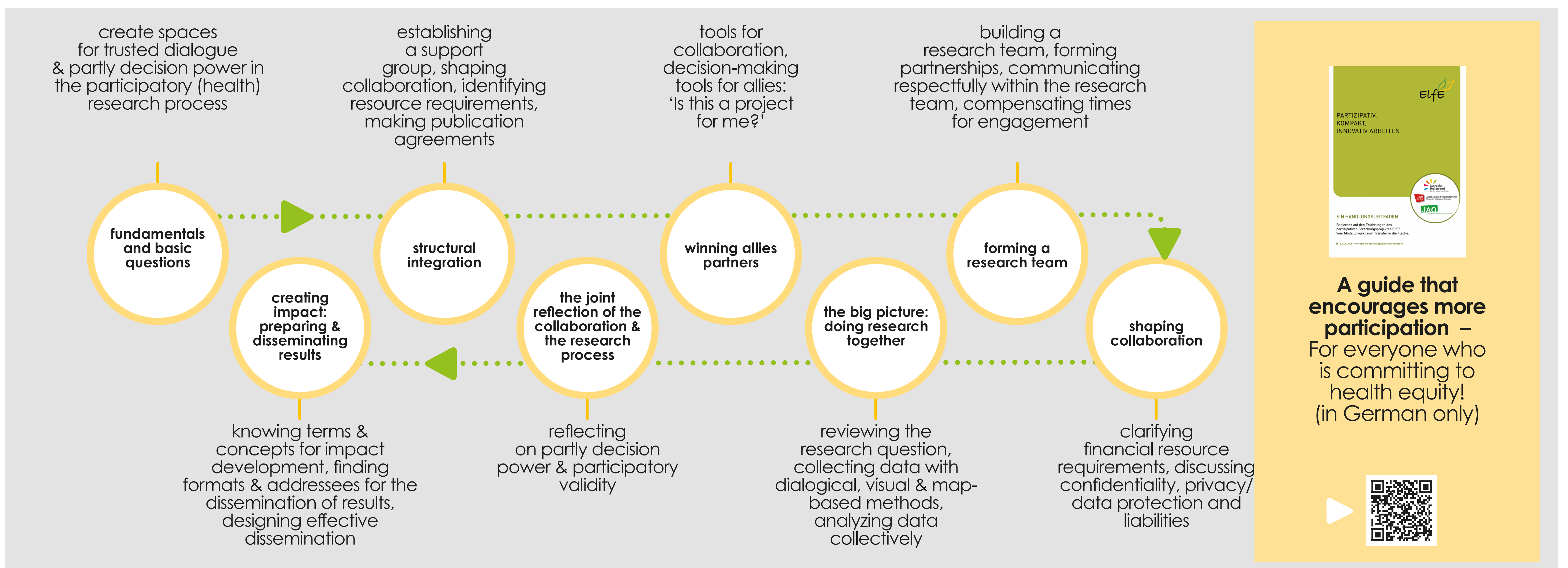
BASIS TRAINING IN PARTICIPATORY PRACTICE:

Designing community practice projects with participatory methods



SHAPING PARTICIPATORY COLLABORATION

findings from the ElFe research process to implement participatory project work



¹ THE RESULTS COME FROM THE FOLLOWING RESEARCH PROJECTS

ElFe
ElFe – Parents Asking Parents/ ElFe² - Parents Asking Parents?: from model project to the field (01.02.2015 - 31.12.2022), funded by the Federal Ministry of Education and Research (FKZ: 01EL1423D/01EL1823D)

Basiskurs Partizipativ Arbeiten
KLuG - Competence Tinkering 'Setting Approach and Health: Participatory Methods' (15.03.2019 - 30.09.2021), funded by the BZgA on behalf of and with funds from the statutory health insurance in accordance with § 20a SGB V

PartNet LERNVIDEOS
Pilot Study
PartNet Learning Videos | Pilot Study (15.03.2017 - 31.08.2018), a project of the Network for Participatory Health Research (PartNet) in cooperation with the Paritätischen Wohlfahrtsverband e.V. and Gesundheit Berlin-Brandenburg e.V., funded by the BZgA.