

10th Alumni Newsletter – News from the University

Dear Alumni,

Today you are receiving the latest **updates** from the university, covering the following topics:

1. Dates for the Second Half of 2025



Once again, we are sharing the key dates for the coming months. Alongside this information, we warmly invite you to take an active part in the events. We look forward to seeing you!

Upcoming Dates from the University

- **21–25 July 2025:** [New Public Health Summer School, as a preparatory event for the new doctoral programme New Public Health](#), funded by the Hans Böckler Foundation, **Application deadline for the doctoral programme scholarship: 2 November 2025**
- **31 July 2025: 18:00 pm – 19:00 pm:** Information event for the Master's degree programme Practice Research in Social Work and Education. In our online information event, we will inform you about the content, framework conditions and career prospects of the degree programme. You can find the link to online access to the event here: <https://www.ash-berlin.eu/studium/studiengaenge/master-praxisforschung-in-sozialer-arbeit-und-paedagogik/profil/>
- **3 September 2025: 1:00 pm – 4 September 2025: 1:30 pm:** [Addiction Policy and Lobbyism: 23rd Symposium of the DHS Scientific Advisory Board](#), The 23rd Symposium of the German Centre for Addiction Issues (DHS) will address the tension between prevention and profit.
- **11 September 2025: 18:00 pm – 19:00 pm:** Information event for the Master's degree programme Practice Research in Social Work and Education. In our online information event, we will inform you about the content, framework conditions and career prospects of the degree programme. The link to the online access to the event will be posted on our [website](#) on the event day.
- **17–19 September 2025:** <https://www.dgsmp-kongress.de/>, 60th Annual Conference of the German Society for Social Medicine and Prevention. Topic: Participation and Co-Creation, Charité Campus Virchow-Klinikum
- **19 September –1:00 pm - 20 September 2025: to 3:30 pm:** [Conference: Early Childhood Education under Unequal Conditions – Current Research Perspectives](#), at ASH Berlin
- **15 October 2025: 18:00 pm to 19:00 pm:** Information event for the Master's degree programme Practice Research in Social Work and Education. In our online information event, we will inform you about the content, framework conditions and career prospects of the

degree programme. The link to the online access to the event will be posted on our [website](#) on the event day.

- **6 November 2025, 6:00–8:00 pm:** Free online information session on the continuing education Master's programme Social Work: Clinical Social Work, in cooperation with career planning services: "Social Work: Clinical Social Work (M.A.): Career Path: Therapist and/or Counsellor?" [Information and registration available online](#)

Event Announcements Online

In addition to the events listed above, you will find **all event announcements** as usual on the ASH Berlin website using the following [link](#). You can also find out there whether an event will take place online or in person.

Dates and News from the Degree Programmes

- **Application deadlines for degree programmes:** You and/or your staff and colleagues can apply for most degree programmes for the winter semester 2025/2026 from **1 June 2025**. You can find the exact application deadlines for each programme here: [Link](#).
- **New Publications:** We are also pleased to present 4 recent publications by ASH lecturers:

Social Pedagogical Risk Assessment: The Role of Social Work in Child Protection: Regina Rätz and Lucia Druba (eds.), 2025

This anthology explores, defines and qualifies the role of social work as a core profession in child protection, particularly in risk assessment. The central assumption is that social pedagogical risk assessment goes beyond assessing the current situation in families, offering concrete, process-oriented support, learning and relationship-building opportunities.



Handbook of Clinical Social Work: Silke Birgitta Gahleitner, Julia Gebrande, Karsten Giertz, Christine Kröger, Dieter Röh and Eva Wunderer (eds.), 2024

Clinical social work has a long-standing tradition and has established itself in recent decades in Germany as a specialised field. This handbook brings together, for the first time, the diverse theoretical, conceptual, ethical and methodological foundations of clinical social work.



Counselling on Right-Wing Extremism and Threats to Democracy: Concepts – Challenges – Intersectional Perspectives: Friedemann Bringt, Marion Mayer, Nora Warrach, and Esther Lehnert (eds.), 2023



This volume brings together practical and academic perspectives on counselling and networking in the field of right-wing extremism and threats to democracy. It provides inspiration for deeper exchange between practice and academia, development of counselling approaches, and insights into theory and practice for those working in, or wishing to better understand, this field.

Clinical Social Work and Social Therapy: Strengthening Human Relationships – Promoting Social Inclusion, Christine Kröger, Silke Birgitta Gahleitner and Susann Höbelberg (eds.), 2025

This volume compiles theoretical foundations and current research on the importance of close interpersonal relationships for health and on the social therapeutic promotion of social integration. Contributions on further training, networking and self-care also address professionals in their career development and professional identity.



- **Library News**

Open-access publication of the journal *Forum Kritische Psychologie – Neue Folge* now available on aliceOpen: In May, the library successfully completed the open-access release of the journal *Forum Kritische Psychologie – Neue Folge*. Issues from **2018 to 2023** are now available via aliceOpen – for the first time, digitally and freely accessible to all. This was made possible through an agreement between the editors, led by Prof. Dr. Ulrike Eichinger, and Argument Verlag, which included an embargo period. From now on, a new issue will be added to aliceOpen each year. For the first time, the library has made a subscription-based journal openly accessible – a model that is hoped to be adopted more widely. Editors of other journals are warmly invited to contact the library.

- **Degree Programme: Practice Research in Social Work and Education**

To better tailor the Master's programme *Practice Research in Social Work and Education* to the interests and needs of professionals, we would like to know what generally interests you in Master's programmes. It's just **three short questions** — please use the **QR code** to access the survey. We look forward to hearing from many interested alumni!



You can find more information about the programme here:

<https://www.ash-berlin.eu/studium/studiengaenge/master-praxisforschung-in-sozialer-arbeit-und-paedagogik/profil/>

2. Featured Degree Programmes

In each newsletter, we introduce two Master's programmes in more detail. Don't hesitate to get in touch with the programme coordinators if you have further questions. They'll be happy to **advise you**.

- **Degree Programme: Management and Care in Health Services (MVG/B.Sc.)**



Skills shortages, demographic change, financial pressures, demands for new healthcare concepts, and ongoing digitalisation – the healthcare sector faces numerous challenges while remaining one of the most significant growth industries.

To be successful in the future, healthcare organisations must be attractive employers and combine innovation, economic efficiency, and a commitment to excellence.

This requires new ideas and evidence-based knowledge. The *Management and Care in Health Services* programme provides the knowledge and skills needed to shape healthcare services and organisations with an eye to the future.

The programme is aimed at professionals from the healthcare sector – students with different healthcare backgrounds study together, bringing a wide range of experiences and skills.

This fosters lively, interprofessional exchange. Practice-based projects, an integrated internship, case studies and other hands-on elements ensure strong links between theory and practice. Small class sizes and dedicated lecturers create a supportive study environment.

The standard period of study is six semesters. The programme starts in both the summer and winter semesters. Only standard semester fees apply – there are no additional tuition fees.

You'll find further information about the programme on our website. For advice, feel free to contact the programme coordination team at: mvg-studieren@ash-berlin.eu

● **Programme: Interprofessional Healthcare – (IGo/B.Sc.)**



The online Bachelor's programme Interprofessional Healthcare (IGo) at ASH Berlin enables professionals in health and care to gain academic qualifications and interprofessional skills, contributing to the transformation of the healthcare system. Our aim is to empower experienced professionals to better understand the healthcare system, strengthen their communication and research skills, and collaborate effectively. The close connection between practice and academic study is a key strength of the programme. Students bring specialist expertise from their own fields and benefit from learning with, from and about each other.

The programme was publicly funded under the "Advancement through Education" scheme (BMBF) and uses modern, digitally-supported teaching methods designed for those working part-time. The goal is to develop *reflective practitioners* with strong (inter)professional and person-centred skills.

Experience from the first years of the programme shows it offers great individual and social value: in 2022, 2023, and 2024, graduates received the Innovation Award from the German Association for Integrated Care (DGIV), and since 2019, teaching staff have repeatedly been named "Teacher of the Year" by the Virtual University of Applied Sciences (VFH).

The programme is part-time. Admission is possible **with or without A-levels**, and there are **no tuition fees**. A completed vocational qualification in a healthcare profession and at least one year of professional experience are required for enrolment.

A recent publication highlights the potential of these hidden champions for higher education and society:

Höppner, Heidi; Kintscher, Sandra: [An innovative educational offer for more cooperation in healthcare. In: Die Neue Hochschule, 2024-5, pp. 15–19.](#)

All information can be found on the ASH website: www.ash-berlin.eu/igo Flyer available for download: [Download Flyer](#). For further enquiries, please contact us at: igo@ash-berlin.eu. The programme starts each winter semester (1 October), and applications are open from **1 June** of each year.

3. Are You an ASH Berlin Alumnus/Alumna and an Artist?

We are looking for ASH alumni who engage in artistic work – all forms of artistic expression are warmly welcome!
Would you like to contribute to one of our events, such as the Alumni Day, with your artistic work?
If yes, we'd love to hear from you: alumni@ash-berlin.eu



4. Summer Party 2025 – That Was the Celebration



The ASH summer party took place on **26 June 2025**, and alumni were also in attendance. We simply celebrated the summer and the evening with dancing to DJ music, delicious food from the grill, and refreshing drinks.

A table football (kicker) and other games were available for guests of all ages. The summer party is also a great opportunity to reconnect with former classmates, friends, and lecturers from ASH.



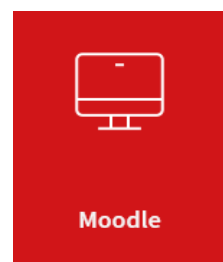
Returning to your alma mater in the summer to see old friends, enjoy Berlin and reminisce – for all of this, the ASH summer party is the perfect place. We look forward to seeing you again next year!

5. Alumni Moodle Platform at ASH Berlin

We have created a **Moodle platform on the theme "Alumni at ASH"** and warmly invite you to join us in this virtual space. It offers you the chance to actively contribute your expertise, ideas, and interests to the development of the alumni network. We hope this is in line with your interests as well.

Members of teaching and support staff at ASH are also welcome to join if they wish.

Moodle is a learning and communication E-platform that allows information such as texts, images, videos, and statistics to be shared and accessed electronically, regardless of time or location. It also enables networking and exchange of ideas.



So far, 24 alumni are taking part in information exchange on this platform. Would you like to join them? Simply get in touch, alumni@ash-berlin.eu, and we will provide you with further details. We are also happy to answer any questions you may have.

As a member of this platform, you are also invited to take part in **regular alumni networking meetings** at ASH Berlin. Invitations will be sent via the Moodle Alumni platform.

6. Career Service Offers

[Jobs and Careers:](#) The Career Service provides a job portal with [listings](#) in the education, health and social sectors.

If you are now an employer or work in HR or recruitment, you are also welcome to use our **free recruitment portal** to present your organisation to students and alumni and to post job adverts. You can register for free using the following [link](#):



PhD Advisory Service: How does a PhD work in general? What options are available for students from universities of applied sciences? How do I develop a proposal for a PhD? To discuss these and other questions, please arrange an advisory appointment by email at: promovieren@ash-berlin.eu

Important Note: Due to internal staffing changes, the Career Service is currently unable to offer in-person consultations. However, you are welcome to send your enquiries by email to: karriere@ash-berlin.eu

7. Become a Scholarship Sponsor and Supporter of Students

We are pleased to announce that in **September 2025**, we will once again be awarding new [Germany Scholarships \(Deutschlandstipendium\)](#) to students in ASH Berlin's Bachelor's and consecutive Master's programmes. The application period runs from **June to August 2025**.



The Germany Scholarship supports high-achieving students with strong academic records who also demonstrate social commitment and face personal challenges.

The funding is split 50/50 between the Federal Ministry of Education and Research (BMBF) and private sponsors.

As in the previous funding period, our sponsors include [Unfallkrankenhaus Berlin](#) and the [Ferdinand and Charlotte Schimmelpfennig-Foundation](#). Since April 2025, the [Berlin Institute for Health and Social Sciences \(BIGSo GmbH\)](#) has also joined the group of ASH

scholarship sponsors.

We are delighted that both our long-standing sponsors and our new partner have extended their support for the next academic year. At this point, we would like to sincerely thank all our donors for their financial contributions.

If you would also like to support the next generation, please get in touch with **Kerstin Miersch** at: alumni@ash-berlin.eu. With just **€150 per month (€1,800 per year)**, you can sponsor a scholarship worth **€300 per month (€3,600 per year)** for a high-performing and socially committed student. Your donation is matched by the federal government and is tax-deductible.

More information is available in [this flyer](#):

8. Germany Scholarship Recipients – In Profile



Who receives a Germany Scholarship at ASH Berlin? What are their academic goals? Which social or healthcare issues are close to their hearts – and why? Where do our scholarship holders volunteer? What personal and social challenges have they had to overcome? In each newsletter, we introduce one of our scholarship recipients.

Today: [Katja Polli Porsch](#), student in the **B.Sc. programme Management and Care in Health Services**.

We also publish these scholarship profiles regularly on our [website](#).

9. ASH Founders' Centre

You can find the services of the **ASH Founders' Centre** – currently focused on initial consultations regarding your ideas, projects, business plans, and funding opportunities – on the ASH website under "Facilities for Students", or directly here: [Founders' Centre](#). The site also features **profiles of founders** and further information relating to their ventures. Would you like your project or start-up to be featured as a graduate of ASH Berlin? Then feel free to get in touch at: gruenderinnenzentrum@ash-berlin.eu

Are you an alumnus/alumna seeking exchange and clarity about (possibly) starting your own business? Then book an individual appointment with us! Are you already following us on LinkedIn? Visit our page here: <https://www.linkedin.com/company/gruenderinnenzentrum-ash-berlin/>

10. Centre for Continuing Education

In the second half of the year, the **Centre for Continuing Education** at your (former) university once again offers a wide range of **practical and professionally relevant learning opportunities!**

Our **certified training courses** are aimed at professionals looking to deepen their expertise at university level, explore new methods, and expand their counselling skills with academic guidance.

Starting in **September**, the following certificate courses, among others, are open for application:

- **Care and Case Management**
A cross-sectoral support process focusing on equal opportunities and strengths-based approaches in human services.
- **Supervision and Coaching**
Recognised by the DGSv (German Association for Supervision and Coaching), this course is for those who want to support individuals, teams, and organisations in a reflective and effective way.
- **Addiction Counselling / Psychosocial Counselling**
Designed for professionals who support people facing complex life circumstances.

All our certified courses combine **theory, self-reflection, and practical methods** – preparing you for a counselling practice that is supportive, empowering, and future-oriented.

Looking to **update your professional knowledge** or reinforce your practical skills? Our **short seminars** (1 to 5 days) offer compact, practice-oriented input on key topics in social work, education, early childhood care, and health. Whether you're interested in communication skills, crisis intervention, intercultural competence or creative methods – with over **70 seminars** to choose from, you'll find the right course for your continued development.

All participants receive a **certificate of attendance** – a valuable addition to your professional qualifications!

We look forward to welcoming you! If you have any questions, feel free to contact us – our details can be found via this link <https://www.ash-berlin.eu/weiterbildung/zentrum-fuer-weiterbildung/information/#c31541>:



11. Alumni Portraits



Each year, many students graduate from ASH Berlin. What fields do they go on to work in? Which career paths do they follow? And how do they contribute to society through their professional roles?

In each newsletter, we introduce one of our alumni. **Today's feature:** [Arife Arslan](#), graduate of the Bachelor's programme Childhood Education and Development in the work-integrated study format, with a focus on leadership and management.

You'll also find our alumni portraits published regularly on our [website](#) and in [alice-online](#), the university magazine of ASH Berlin.

12. ASH Berlin Graduate Survey 2024 – Results



Absolvent_innenbefragung 2024

We would like to take this opportunity to sincerely thank everyone who participated in the graduate survey in spring 2024.

The prize draw among participants has taken place and the prizes have been successfully distributed.

The survey results show a **high level of satisfaction** among respondents regarding their study experiences and preparation for professional life. Feedback highlighted the importance of continuing to strengthen **digital skills** and the **integration of theory and practice** in curriculum development.

A summary of the results is available on the ASH Berlin [website](#).

These insights make a valuable contribution to ensuring and developing the quality of teaching and learning at ASH Berlin, and are feeding into the development of a **university-wide quality culture**. Thank you for your valuable feedback.

13. Press and Newsroom

The **ASH Berlin magazine** is now available exclusively [online](#). Content is updated regularly. You can also subscribe to the **ASH Berlin Newsletter**, aimed at the wider university public.

To sign up, please use the following link:

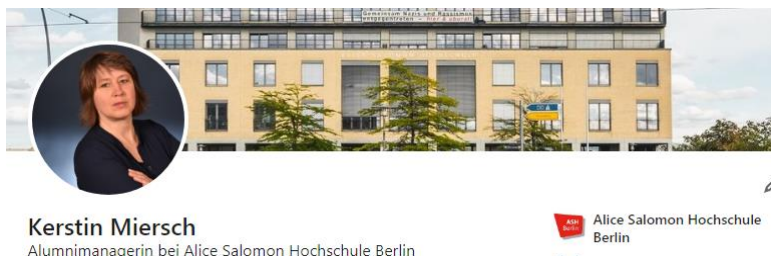
<https://www.ash-berlin.eu/hochschule/presse-und-newsroom/newsletter/>

We hope you enjoy reading it and find plenty of inspiration.

14. ASH Berlin Alumni on LinkedIn

ASH Berlin has a **LinkedIn chat group for alumni**, which we warmly recommend as a space for communication and exchange:

<https://www.linkedin.com/in/kerstin-miersch-9105ab261/>



Of course, ASH Berlin also has an **official LinkedIn profile**:

<https://www.linkedin.com/school/alice-salomon-hochschule-berlin/>

There, you will also find a tab titled **"Alumni"**, which lists all LinkedIn users who have stated that they studied at ASH Berlin:

<https://www.linkedin.com/school/alice-salomon-hochschule-berlin/people/>

By the way, ASH Berlin also posts job vacancies on LinkedIn:

<https://www.linkedin.com/jobs/alice-salomon-hochschule-berlin-jobs-worldwide>

You can find additional job postings advertised through ASH Berlin's **JobTeaser** platform here:

<https://ash-berlin.jobteaser.com>

15. A Word of Thanks – Study Check



Do you enjoy talking about your time at university and would like to share your experiences? Then help prospective students by reviewing your degree programme here: <https://www.studycheck.de/bewerten>

16. Keep Your Contact Details Up to Date

To stay in touch with you in the long term, we kindly ask that you inform us if your contact details change — especially your **email address**.

If you update your email address, please let us know. Thank you!

With warm regards – and stay in touch!

Kerstin Miersch – Alumni Relations, ASH Berlin

Prof. Dr. Gesine Bär – Vice President for Research, Cooperation and Continuing Education

